

# DATUM CONTROL COMPANY, INC

**New CNC Capabilities!**



**Connecting Your Business to New Resources**

**Datum Control Company is  
a full-service CNC and NC  
machine shop.**

**ISO 9001:2008 certified.**



## 160" x 62" x 38" Gantry CNC Mill Technology at work for you

**We would like to show you our Machining capabilities  
up to 160" on our newly acquired Gantry CNC Mill for all  
your machining projects.**

We have extensive experience in manufacturing large parts for  
multiple industries to meet engineering specifications for:

- Space and Defense
- Aviation Industry
- Medical Industry
- Robotics
- Electronics
- Plastic Injection Molding
- Foam structures
- Prototypes
- Special 3D surfaces
- R & D
- Hi-Performance parts
- Composites

### Facilities List

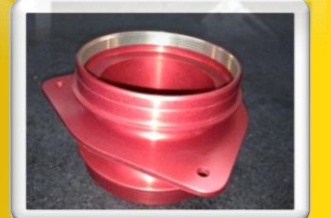
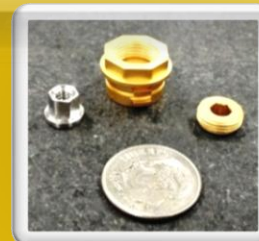
- New Gantry CNC Mill  
160" x 62" x 38"
- Vertical CNC Mill  
84" x 39" x 32"
- Vertical CNC Mill  
40" x 23" x 24"
- Vertical CNC Mill  
26" x 16" x 17"
- Gantry CNC Mill  
118" x 45" x 22"
- CNC Lathe 19" x 44"

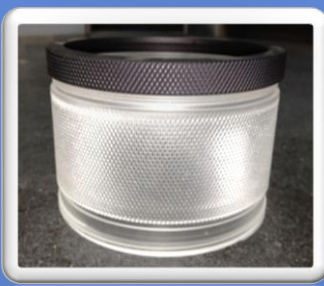
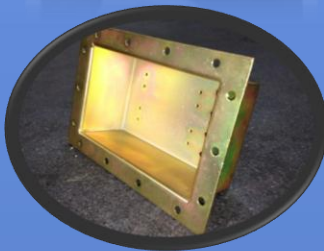
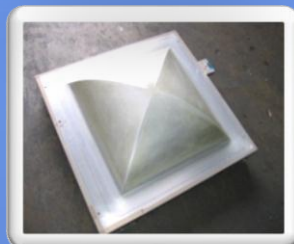
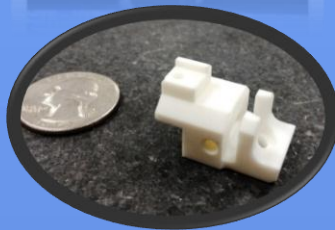
### Manual Equipment

- Lathe 14" x 40"
- Bridgeport mill
- Surface grinder
- Deburring/polishing  
Dept.

### Quality Assurance

- ISO 9001:2008 QMS





## MACHINING SOLUTIONS MADE EASY

Machining services include contour milling, drilling, turning, tapping, threading, grinding & deburring.

**10,000 Square Foot  
Machining Facility**

Options include tumbling, electro polishing, electroplating (gold), chem-film, black oxide, passivation, anodizing, annealing, hardening, stress relieving and powder coating from our approved suppliers.

## MACHINING SOLUTIONS



## DATUM CONTROL COMPANY

2926 E. Coronado Street  
Anaheim, CA 92806

714-414-1170 phone

714-414-1172 fax

[datumcontrol.com](http://datumcontrol.com)

**Contact us for a quote today.**

email: [rfq@datumcontrol.com](mailto:rfq@datumcontrol.com)

Our CAD system is capable of handling all your CAD files.